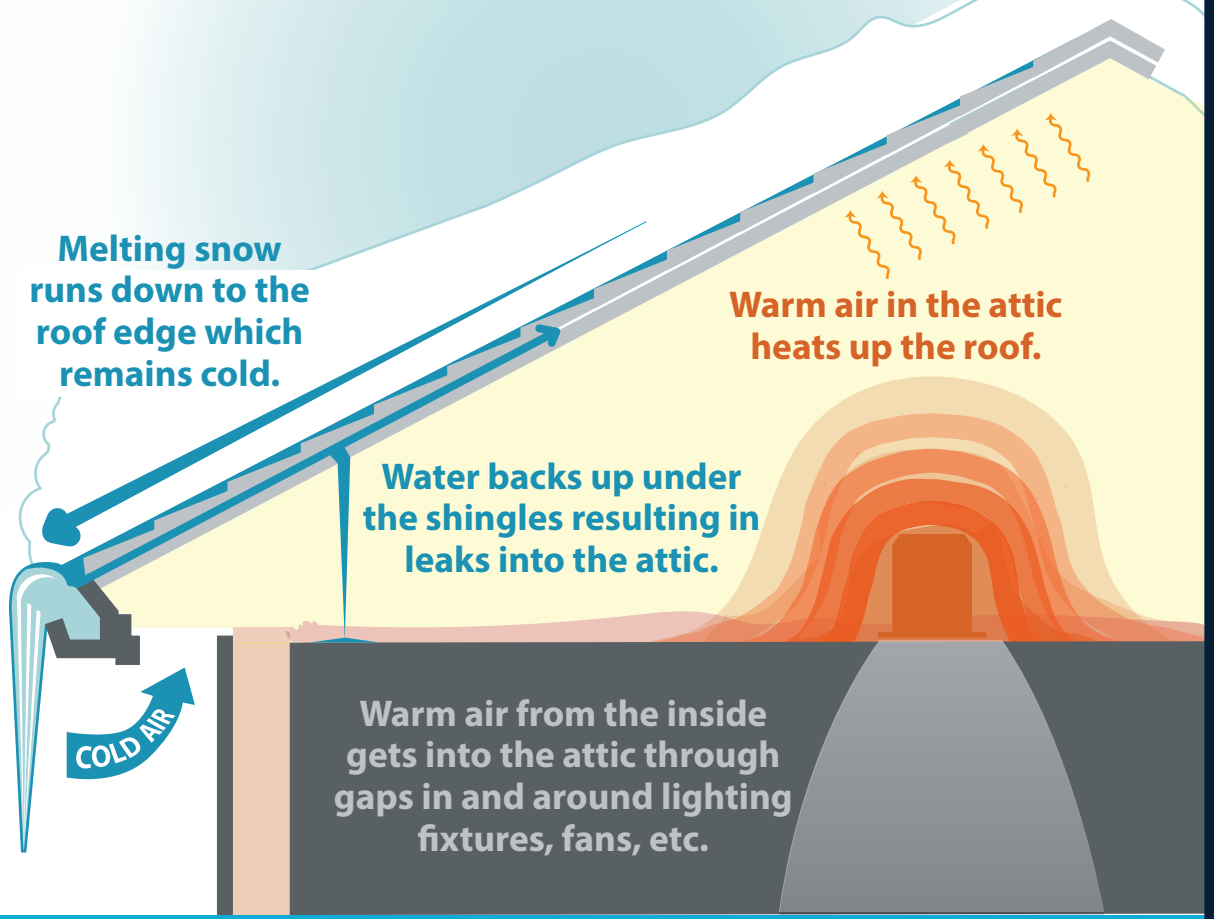


Commercial Ice Dam Guidance For Steep-Sloped Roofs

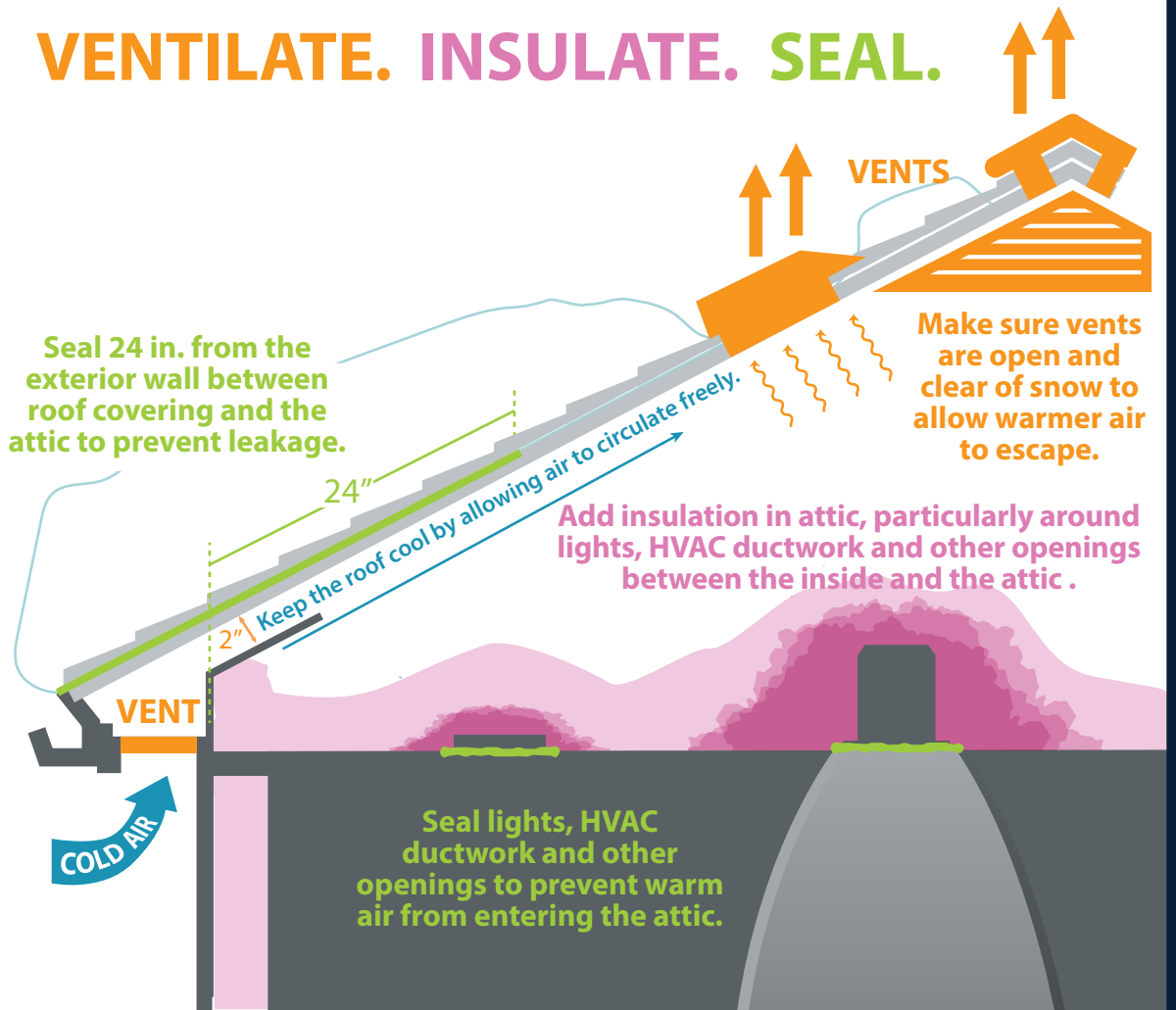
The Risk

While ice dams may form on low-sloped roofs, businesses occupying buildings with steep-sloped roofs may be more likely to encounter them.



Preventing Damage

VENTILATE. INSULATE. SEAL.



Removing Ice Dams

Hire a professional when removing ice dams.

